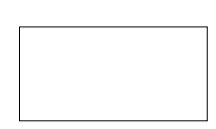




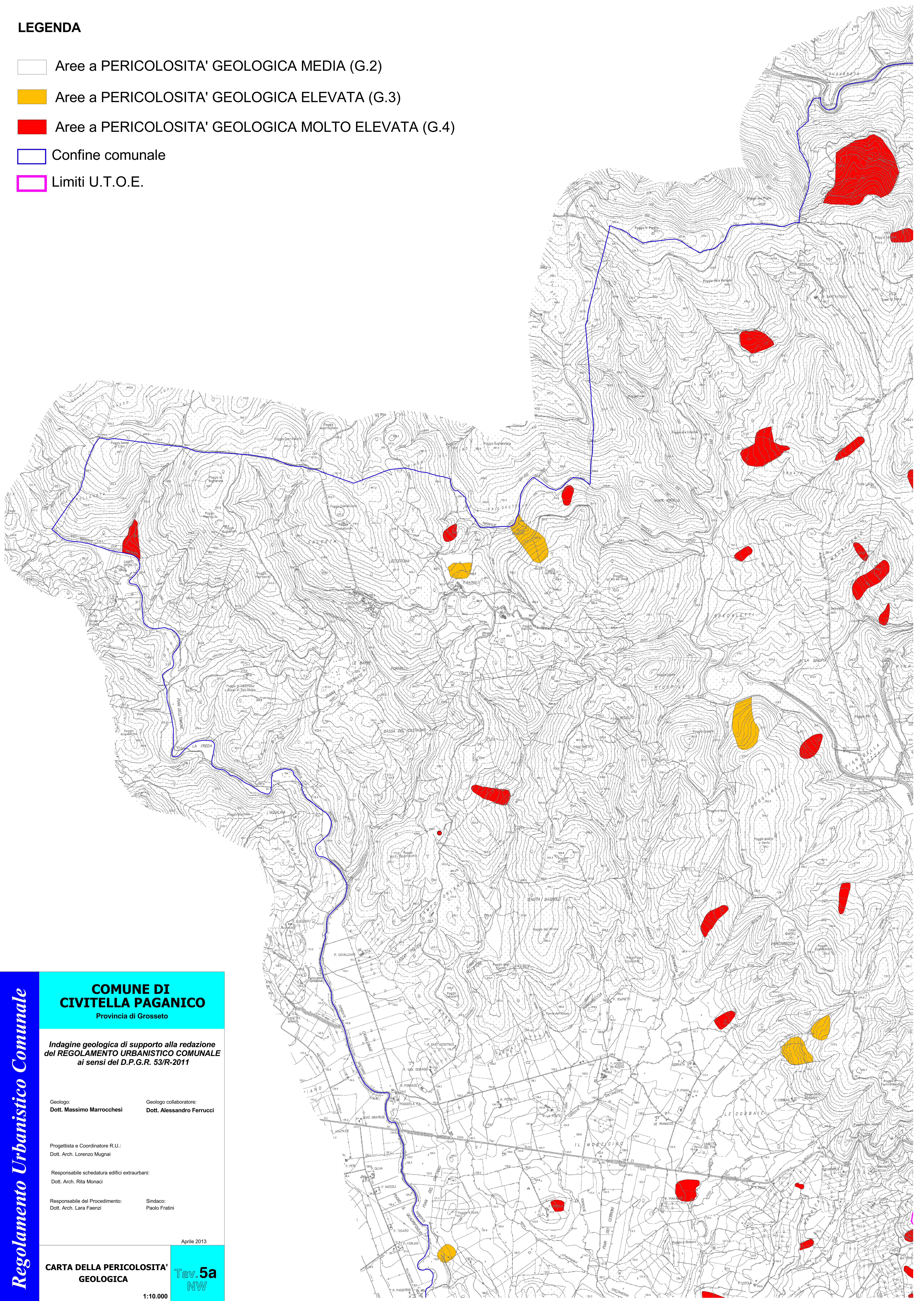


## LEGENDA

-  Aree a PERICOLOSITA' GEOLOGICA MEDIA (G.2)
-  Aree a PERICOLOSITA' GEOLOGICA ELEVATA (G.3)
-  Aree a PERICOLOSITA' GEOLOGICA MOLTO ELEVATA (G.4)
-  Confine comunale
-  Limiti U.T.O.E.



### COMUNE DI CIVITELLA PAGHANICO Provincia di Grosseto

Indagine geologica di supporto alla redazione  
del **REGOLAMENTO URBANISTICO COMUNALE**  
ai sensi del D.P.G.R. 53/R-2011

Geologo:  
Dott. Massimo Marrocchesi

Geologo collaboratore:  
Dott. Alessandro Ferrucci

Progettista e Coordinatore R.U.:  
Dott. Arch. Lorenzo Mugnai

Responsabile schedatura edifici extraurbani:  
Dott. Arch. Rita Monaci

Responsabile del Procedimento:  
Dott. Arch. Lara Faenzi

Sindaco:  
Paolo Fratini

Aprile 2013

**CARTA DELLA PERICOLOSITA'  
GEOLOGICA**

**Tav. 5a  
NW**

1:10.000