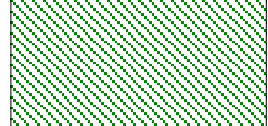
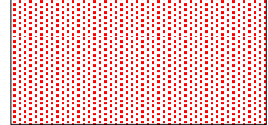





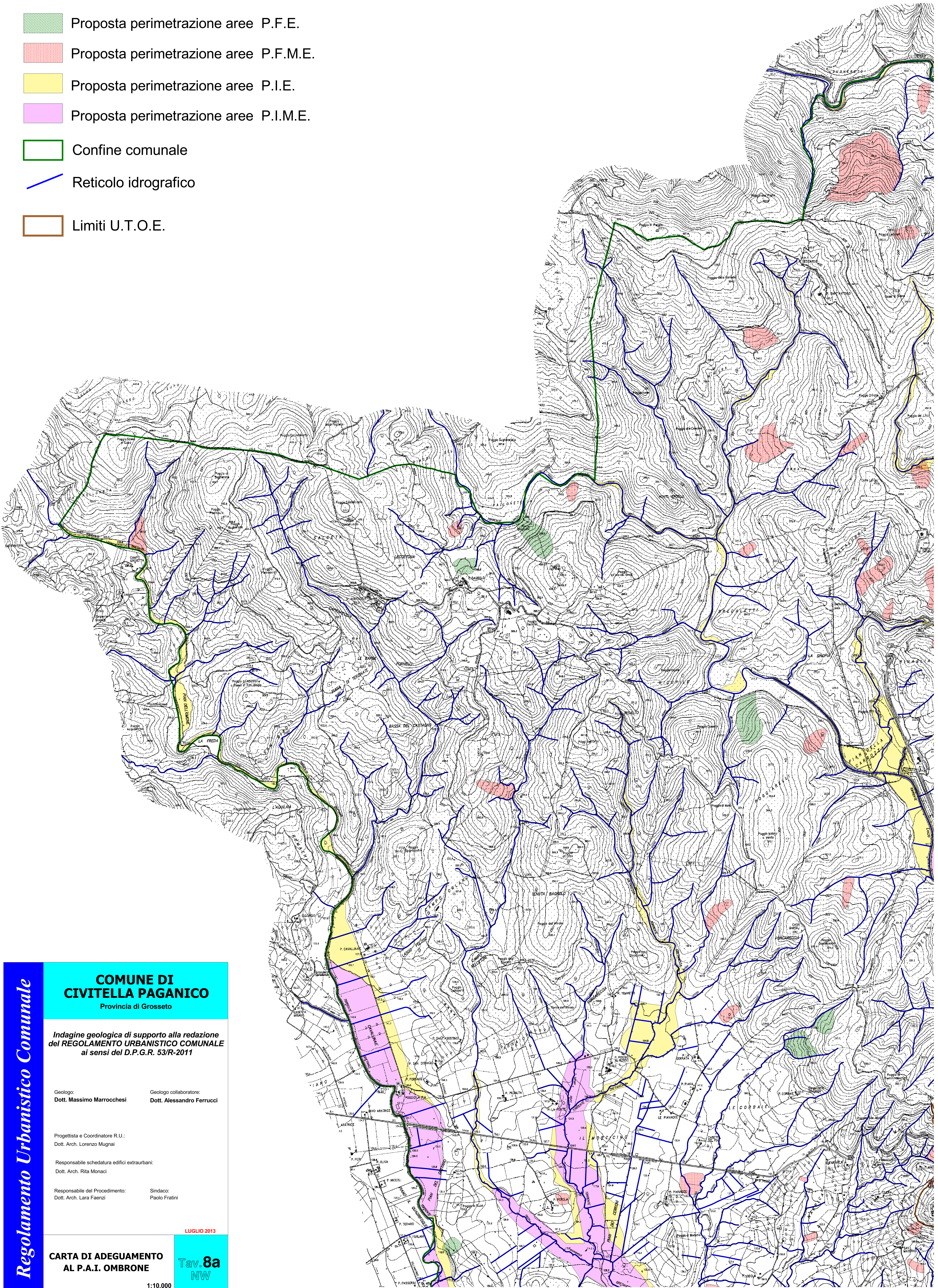


LEGENDA

-  Proposta perimetrazione aree P.F.E.
-  Proposta perimetrazione aree P.F.M.E.
-  Proposta perimetrazione aree P.I.E.
-  Proposta perimetrazione aree P.I.M.E.
-  Confine comunale
-  Reticolo idrografico
-  Limiti U.T.O.E.



Regolamento Urbanistico Comunale

COMUNE DI CIVITELLA PAGANICO

Provincia di Grosseto

Indagine geologica di supporto alla redazione del **REGOLAMENTO URBANISTICO COMUNALE** ai sensi del D.P.G.R. 53/R-2011

Geologo: **Dott. Massimo Marrocchesi** Geologo collaboratore: **Dott. Alessandro Ferrucci**

Progettista e Coordinatore R.U.: **Dott. Arch. Lorenzo Mugnai**

Responsabile schedatura edifici extraurbani: **Dott. Arch. Rita Monaci**

Responsabile del Procedimento: **Dott. Arch. Lara Faenzi** Sindaco: **Paolo Fratini**

LUGLIO 2013

CARTA DI ADEGUAMENTO AL P.A.I. OMBRONE

Tav. 8a
NW

1:10.000